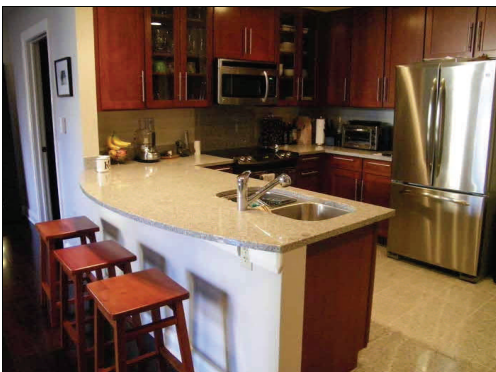
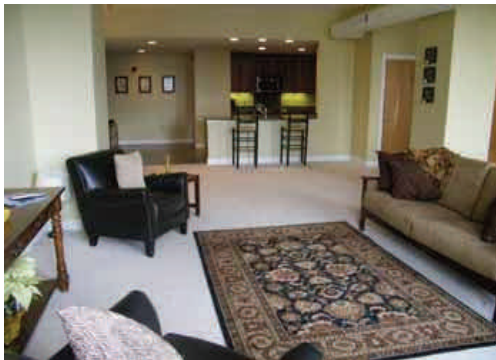


# FULLY LEASED INVESTOR UNITS AT THE CARLYLE



- ◆ Packages range from \$296,000 to \$1.687 million
  - ◆ Tax efficient with approximately 70-75% of income sheltered
  - ◆ Single and multi-unit packages available



**Located @ 306 Fourth Avenue  
in historic downtown Pittsburgh**

**For Tours and Information, Contact:**

**SCOTT BRANOVAN**

**SALES DIRECTOR**

**412-325-1190**

**[SBRANOVAN@EVBCO.COM](mailto:SBRANOVAN@EVBCO.COM)**

**[WWW.CARLYLECONDO.COM](http://WWW.CARLYLECONDO.COM)**